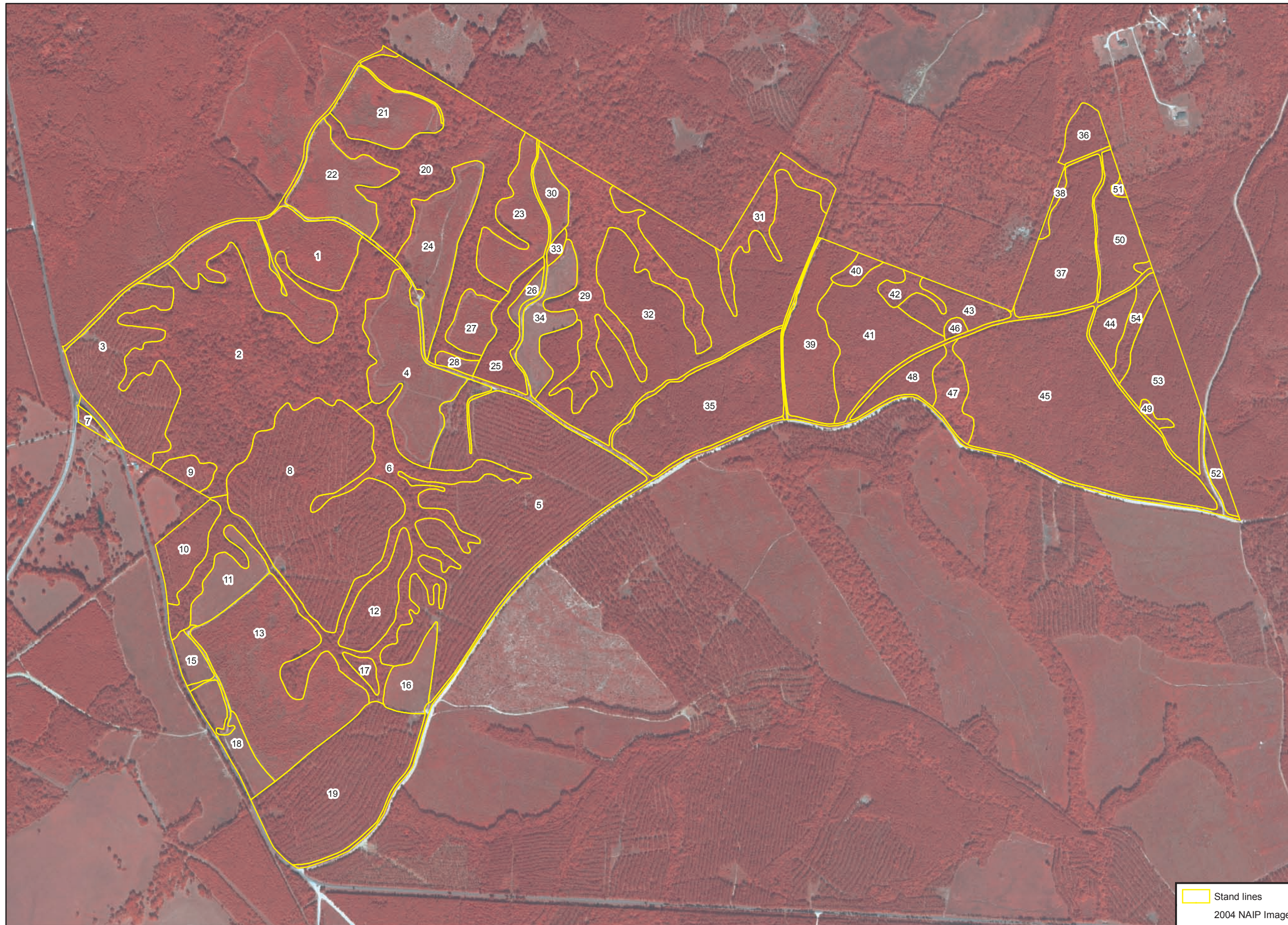


Parcel #8 Oakhurst Tract San Jacinto, TX

Stand	Forest Type	Year Est	Acreege
1	Pine Plantation - PreMerch	2000	28.85
2	Pine Hardwood	1968	78.02
3	Pine Plantation - Merch	1988	26.02
4	Pine Plantation - PreMerch	2000	23.56
5	Pine Plantation - Merch	1988	78.77
6	Bottomland Hardwood	1961	38.48
7	Pine Plantation - Merch	1988	0.93
8	Pine Plantation - Merch	1988	57.41
9	Pine Plantation - Merch	1988	2.94
10	Pine Plantation - PreMerch	2003	7.67
11	Pine Plantation - PreMerch	2003	8.12
12	Pine Plantation - Merch	1988	9.10
13	Pine Plantation - PreMerch	1998	41.85
15	Pine Plantation - PreMerch	2003	3.01
16	Pine Plantation - PreMerch	2003	6.31
17	Pine Plantation - Merch	1988	1.53
18	Pine Plantation - PreMerch	2003	7.09
19	Pine Plantation - Merch	1988	36.58
20	Bottomland Hardwood	1961	45.02
21	Pine Plantation - PreMerch	2000	12.72
22	Pine Plantation - PreMerch	2000	14.89
23	Pine Plantation - PreMerch	2000	13.05
24	Pine Plantation - PreMerch	2000	16.38
25	Pine Plantation - Merch	1989	7.44
26	Pine Plantation - PreMerch	2003	1.54
27	Pine Plantation - PreMerch	2000	5.42
28	Pine Plantation - PreMerch	2000	1.36
29	Bottomland Hardwood	1961	29.07
30	Pine Plantation - PreMerch	2000	4.16
31	Bottomland Hardwood	1961	9.55
32	Pine Plantation - Merch	1989	70.46
33	Pine Plantation - Merch	1989	0.92
34	Pine Plantation - PreMerch	2003	9.20
35	Pine Plantation - Merch	1989	30.17
36	Pine Plantation - Merch	1989	4.35
37	Pine Plantation - Merch	1989	19.78
38	Upland Hardwood	1945	0.94
39	Pine Plantation - PreMerch	1994	17.85
40	Upland Hardwood	1945	1.93
41	Pine Plantation - Merch	1990	21.72
42	Upland Hardwood	1945	2.60
43	Pine Plantation - Merch	1989	7.15
44	Pine Plantation - Merch	1989	4.68
45	Pine Plantation - Merch	1989	64.55
46	Upland Hardwood	1945	0.85
47	Upland Hardwood	1945	5.74
48	Pine Plantation - Merch	1990	5.73
49	Upland Hardwood	1945	0.83
50	Pine Plantation - Merch	1989	10.81
51	Upland Hardwood	1945	0.77
52	Pine Plantation - Merch	1989	2.49
53	Pine Plantation - Merch	1989	16.74
54	Upland Hardwood	1945	3.97
	Non Forest		0
		Total Acres:	951.38



Stand lines
2004 NAIP Image

**Cost/Acre
\$3,200**



0 0.1 0.2 0.3
Miles



www. EastTexasLandAndTimber.com