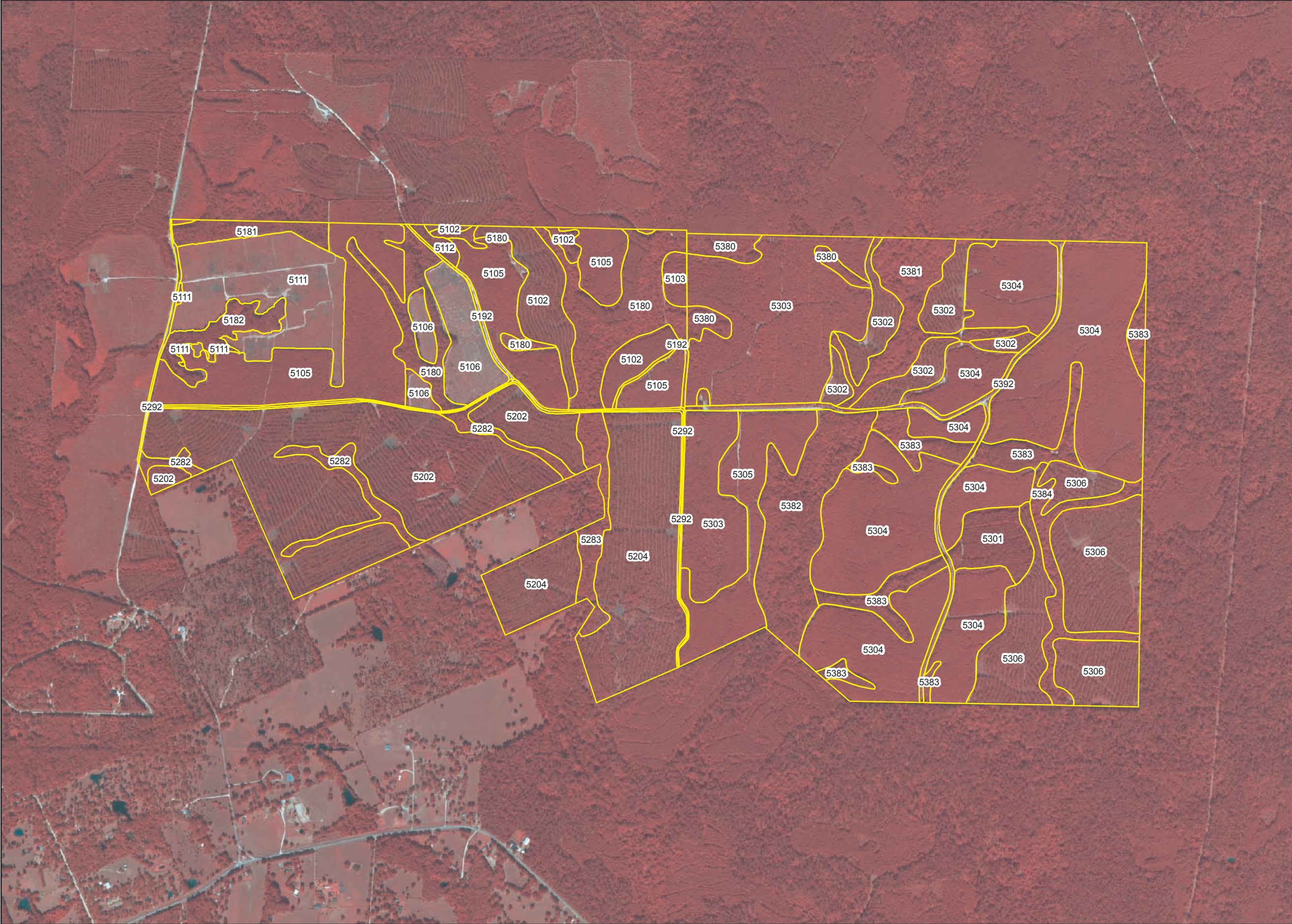


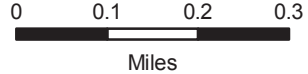
Parcel #3
Bella Corroli Tract
 San Jacinto County, TX

Stand	Forest Type	Year	Acreage
5102	Pine Plantation - PreMerch	1988	30.43
5103	Pine Plantation - PreMerch	1991	3.88
5105	Pine Plantation - Merch	1994	103.28
5106	Pine Plantation - Merch	2004	25.69
5107	Pine Plantation - Merch	1999	0.28
5111	Pine Plantation - Merch	2005	52.29
5112	Pine Plantation - PreMerch	1975	2.30
5180	Upland Hardwood	1947	55.64
5181	Upland Hardwood	1947	9.14
5182	Pine / Hardwood	0	11.78
5192	Non Forest	0	3.52
5202	Pine Plantation - PreMerch	1985	148.48
5204	Pine Plantation - PreMerch	1985	90.11
5282	Bottomland Hardwood	1949	15.99
5283	Bottomland Hardwood	1949	12.88
5292	Non Forest	0	9.89
5301	Clearcut	1973	14.05
5302	Pine Plantation - PreMerch	1988	34.19
5303	Pine Plantation - PreMerch	1991	108.76
5304	Pine Plantation - Merch	1994	237.72
5305	Pine Plantation - Merch	1994	36.06
5306	Pine Plantation - PreMerch	1988	83.92
5380	Pine / Hardwood	1937	11.63
5381	Pine / Hardwood	1937	25.97
5382	Pine / Hardwood	1937	43.25
5383	Pine / Hardwood	1937	35.62
5384	Pine / Hardwood	1937	15.94
5392	Non Forest	0	12.12
5396	Non Forest	0	0.64
Total Acres:			1,235.45

Cost/Acre
\$3,500



Stand lines
 2004 NAIP Image



www. EastTexasLandAndTimber.com